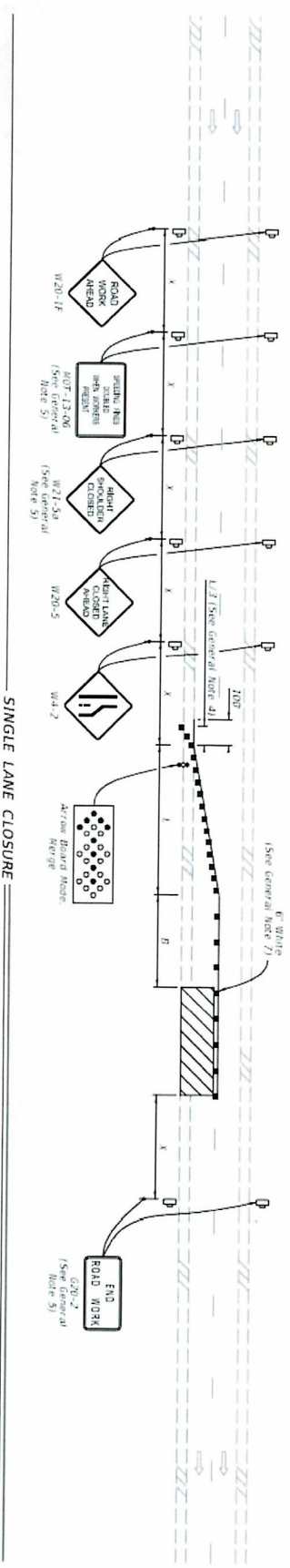


Left Lane Closures (FDOT 102-613) for Shuttle Lane NB & SB
NB Closure Starts On N Atlantic Ave prior to S 4th St and continues past Sidney Fischer Park
SB Closure Starts On N Atlantic Ave Prior to Sidney Fischer Park and continues onto S Orlando Ave past N 1st St



DATE	NO	REVISIONS	DESCRIPTION

ALL AMERICAN BARRICADES CORP 7300 SW 15th AVENUE F-1888-4 SAFETY (888-472-3389) www.barricades.com / email: damian@barricades.com		DAMIAN A. RADICE 7300 SW 15th AVENUE F-1888-4 SAFETY (888-472-3389) www.barricades.com / email: damian@barricades.com	
Florida Surf Museum PO Box 321453 Cocoa Beach, FL 32932 ROAD NO. / COORDINATES 28 3194 - 80 8085		COMPANY NAME COUNTY BREVARD	
SURF Type Special Event		DATE: 12/22/2025 PROJECT NAME / LOCATION TOP DESIGNER: Damian Radice Surfing Santos IN COCOA BEACH Cocoa Beach, FL 32931	
SHEET NO.		7	